

# 1. PaDIL Species Factsheet



---

## Scientific Name:

*Raphanus raphanistrum* Linnaeus, C (1753)

(Magnoliophyta: Magnoliopsida: Capparales: Brassicaceae )

## Common Name

Wild radish

Live link: <http://www.padil.gov.au/seeds/Pest/Main/142701>

## Image Library

Seed Library

Live link: <http://www.padil.gov.au/seeds/>

## Partners for Seed Library image library



Australian Government  
Department of Agriculture,  
Water and the Environment

Department of Agriculture, Water and the Environment

<https://www.awe.gov.au/>

**MUSEUMS  
VICTORIA**

Museums Victoria

<https://museumsvictoria.com.au/>

## 2. Species Information

### 2.1. Details

**Specimen Contact:** AQIS -

**Author:** Clare McLellan

**Citation:** Clare McLellan (2012) Wild radish (*Raphanus raphanistrum*) Updated on 1/17/2013 Available online: PaDIL - <http://www.padil.gov.au>

**Image Use:** Free for use under the Creative Commons Attribution-NonCommercial 4.0 International (CC BY-NC 4.0)

### 2.2. URL

Live link: <http://www.padil.gov.au/seeds/Pest/Main/142701>

### 2.3. Facets

**Fruit appendages:** Ridges or grooves, Roughened

**Fruit colour:** Straw coloured, Yellow

**Fruit length:** 5-7mm, Greater than 7mm

**Fruit shape:** Aggregate

**Reliability:** High

**Seed colour:** Reddish-brown

**Seed length:** 1.1 to 2mm

**Seed sculpture:** Reticulate, Rugose

**Seed shape:** Narrowly oblong

### 2.4. Other Names

*Jointed Charlock*

*White Charlock*

### 2.5. Diagnostic Notes

**\*\*Pictured:\*\*** Fruit chamber (silicle) and seed(s)

**\*\*Description:\*\***

Silicle appendages: Ridges and grooves, Roughened

Silicle Colour: Straw coloured, Yellow

Silicle Length: 5 - 7mm, Greater than 10mm

Silicle shape: Constricted between articles

Seed Colour: Reddish brown

Seed Length: 1 - 2mm

Seed Sculpture: Reticulate

Seed Shape: Narrowly oblong

Siliqua 1–5 cm long, 3–5 mm wide, markedly constricted between seeds and breaking into 1-seeded portions; valves somewhat horny; beak 1–2 mm long; pedicel 10–30 mm long

Source: Royal Botanic Gardens and Domain Trust  
PlantNET - FloraOnline

## 2.6. Web Links

**PlantNET - FloraOnline:** <http://plantnet.rbgsyd.nsw.gov.au>

### 3. Diagnostic Images



Australian \$2 Coin with seeds and fruit  
**Coin compare:** Clare McLellan Museums  
 Victoria



Seed Project  
**Group Image:** Clare McLellan Museums  
 Victoria



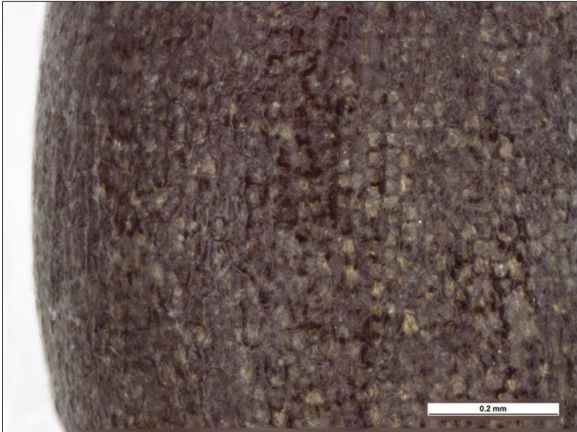
Seed Project  
**Seed Dorsal:** Clare McLellan Museums  
 Victoria



Seed Project  
**Seed Hilum:** Clare McLellan Museums  
 Victoria



Seed Project  
**Seed Lateral :** Clare McLellan Museums  
 Victoria



Seed Project  
**Seed Surface Detail:** Clare McLellan  
 Museums Victoria



Seed Project  
**Seed Ventral:** Clare McLellan Museums  
Victoria



Seed Project  
**Silicle Dorsal:** Clare McLellan Museums  
Victoria



Seed Project  
**Silicle Lateral:** Clare McLellan Museums  
Victoria



Seed Project  
**Silicle Section :** Clare McLellan Museums  
Victoria

## Results Generated:

Monday, January 18, 2021

---