

# 1. PaDIL Species Factsheet



---

## Scientific Name:

*Sisymbrium orientale* Linnaeus, C (1753)

(Magnoliophyta: Magnoliopsida: Capparales: Brassicaceae)

## Common Name

Indian hedge mustard

Live link: <http://www.padil.gov.au/seeds/Pest/Main/142707>

## Image Library

Seed Library

Live link: <http://www.padil.gov.au/seeds/>

## Partners for Seed Library image library



Australian Government  
Department of Agriculture,  
Water and the Environment

Department of Agriculture, Water and the Environment

<https://www.awe.gov.au/>

**MUSEUMS  
VICTORIA**

Museums Victoria

<https://museumsvictoria.com.au/>

## 2. Species Information

### 2.1. Details

**Specimen Contact:** AQIS -

**Author:** Clare McLellan

**Citation:** Clare McLellan (2012) Indian hedge mustard(*Sisymbrium orientale*)Updated on 1/18/2013 Available online: PaDIL - <http://www.padil.gov.au>

**Image Use:** Free for use under the Creative Commons Attribution-NonCommercial 4.0 International (CC BY-NC 4.0)

### 2.2. URL

Live link: <http://www.padil.gov.au/seeds/Pest/Main/142707>

### 2.3. Facets

**Fruit appendages:** Ridges or grooves

**Fruit colour:** Staw coloured, Yellow

**Fruit length:** Great than 7mm

**Fruit shape:** Cylindrical

**Reliability:** High

**Seed colour:** Brown Dark, Brown light, Reddish-brown

**Seed length:** 1.1 to 2mm, 1mm or less

**Seed sculpture:** Granular, Rugose

**Seed shape:** Squarish oblong

### 2.4. Other Names

*Eastern rocket*

*Hedge mustard*

*Indian headgemustard*

*Sisymbrium columnae* Jacqin, N.J. von (1776)

*Wild mustard*

### 2.5. Diagnostic Notes

**\*\*Pictured:\*\*** Silicle (Fruit chamber) and seed(s)

**\*\*Description:\*\***

Silicle Appendages: Ridges and grooves

Silicle Colour: Straw colour

Silicle Length: Greater than 10mm

Silicle shape: Cylindrical

Seed Colour: Reddish brown

Seed Length: Less than 1mm, 1 - 2mm

Seed Sculpture: Granular, Rugose

Seed Shape: Squarish oblong

Annual or biennial weed 25–90 cm high, erect, pubescent with hairs short, soft, reflexed.

Inflorescence without bracts. Sepals 4–5 mm long, bristly. Petals 6–10 mm long, yellow to pale yellow. Style plus clavate stigma 1–3.5 mm long. Siliqua linear, spreading, 4–10 cm long, 1–2 mm wide, thick-walled; pedicel spreading, 3–10 mm long.

Source: Royal Botanic Gardens and Domain Trust

PlantNET - FloraOnline

### 3. Diagnostic Images



Australian \$2 Coin with seeds  
**Coin compare:** Clare McLellan Museums  
Victoria



Seed Project  
**Group Image:** Clare McLellan Museums  
Victoria



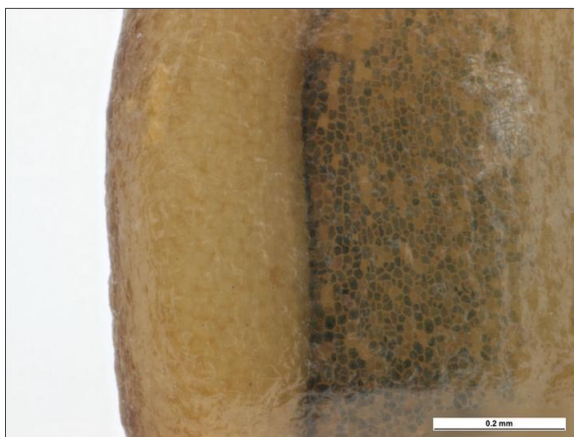
Seed Project  
**Seed Dorsal:** Clare McLellan Museums  
Victoria



Seed Project  
**Seed Hilum:** Clare McLellan Museums  
Victoria



Seed Project  
**Seed Lateral :** Clare McLellan Museums  
Victoria



Seed Project  
**Seed Surface Detail:** Clare McLellan  
Museums Victoria



Seed Project  
**Seed Ventral:** Clare McLellan Museums  
Victoria



Seed Project  
**Silicle:** Clare McLellan Museums Victoria

## 4. Other Images



Seed Project  
**Seed Lateral** : Clare McLellan Museums  
Victoria



Seed Project  
**Silicle Detail**: Clare McLellan Museums  
Victoria

## Results Generated:

Sunday, May 9, 2021

---