

# 1. PaDIL Species Factsheet



---

## Scientific Name:

*Varroa destructor* Anderson & Trueman  
(Arachnida: Acari: Varroidae)

## Common Name

Varroa Mite

Live link: <http://www.padil.gov.au/thai-bio/Pest/Main/140447>

## Image Library

Thailand Biosecurity

Live link: <http://www.padil.gov.au/thai-bio/>

## Partners for Thailand Biosecurity image library



Department of Agriculture, Thailand  
<http://www.doa.go.th/>

## 2. Species Information

### 2.1. Details

**Specimen Contact:** Museum Victoria - [discoverycentre@museum.vic.gov.au](mailto:discoverycentre@museum.vic.gov.au)

**Author:** Walaikorn Rattanadechakul

**Citation:** Walaikorn Rattanadechakul (2011) Varroa Mite (*Varroa destructor*) Updated on 2/3/2011 Available online: PaDIL - <http://www.padil.gov.au>

**Image Use:** Free for use under the Creative Commons Attribution-NonCommercial 4.0 International (CC BY-NC 4.0)

### 2.2. URL

Live link: <http://www.padil.gov.au/thai-bio/Pest/Main/140447>

### 2.3. Facets

**D1 - Country:** Australasia - Oceania, Cosmopolitan, USA and Canada, Central and South America, Europe and Northern Asia, Mediterranean Basin, Africa, South and South-East Asia

**D2 - Province:** Unknown

**Group Overview:** Pest

**Group Type:** Mites

**Host Overview:** Horticulture

**Host Type:** Mango

**Risk:** Unknown

**Status:** Uncertain Status

### 2.4. Other Names

*honey bee parasite*

### 2.5. Diagnostic Notes

Adult female mites are brown to dark brown, shaped like a crab.

Body measurements can be used to distinguish *V. jacobsoni* and *V. destructor*.

	Body Length	Body width
<i>V. jacobsoni</i>	1.06mm	1.50mm
<i>V. destructor</i>	1.16mm	1.70mm

Source:

Zhi-Qiang Zhang (2000) see references and weblinks

Their curved bodies fit into abdominal folds of the adult bee and are held there by the shape and arrangement of ventral setae. This protects them from the bee's normal cleaning habits. Adult males are yellowish with lightly tanned legs and spherical body shape. The male chelicerae are modified for transferring sperm. The protonymph and deutonymph stages were described by Delfinado-Baker (1984).

Source:

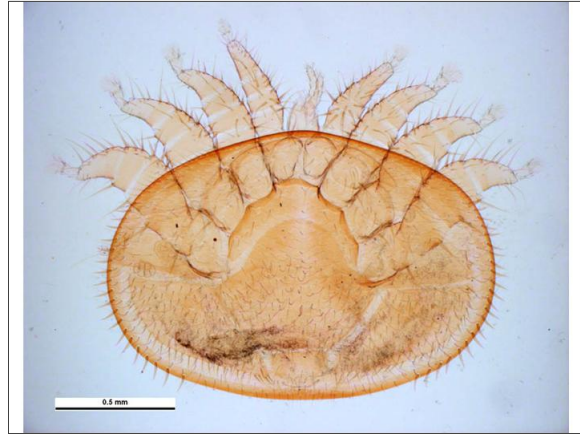
M.T. Sanford, University of Florida; H.A. Denmark, Florida Department of Agriculture and Consumer Services (FDACS), Division of Plant Industry; H.L. Cromroy, University of Florida; and L. Cutts, FDACS, Division of Plant Industry.

[http://creatures.ifas.ufl.edu/misc/bees/varroa\\_mite.htm](http://creatures.ifas.ufl.edu/misc/bees/varroa_mite.htm)

### 3. Diagnostic Images



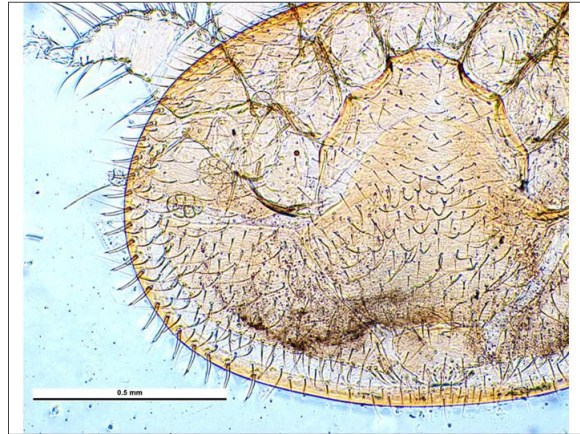
New Zealand, Auckland Mangere, 2 June 2000, ex *Apis mellifera* cobs from hive  
**Dorsal male:** Simon Hinkley & Ken Walker Museum Victoria Museums Victoria



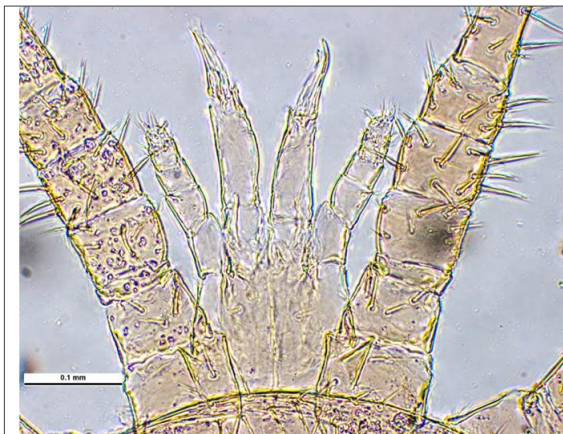
New Zealand, Auckland Mangere, 2 June 2000, ex *Apis mellifera* cobs from hive  
**Dorsal view female:** Simon Hinkley & Ken Walker Museum Victoria Museums Victoria



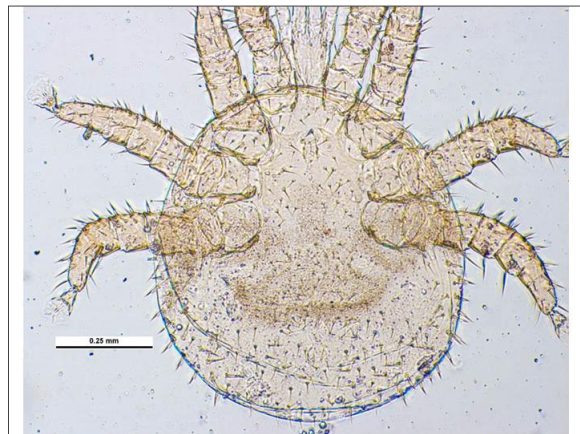
New Zealand, Auckland Mangere, 2 June 2000, ex *Apis mellifera* cobs from hive  
**Female mouthparts:** Simon Hinkley & Ken Walker Museum Victoria Museums Victoria



New Zealand, Auckland Mangere, 2 June 2000, ex *Apis mellifera* cobs from hive  
**Female ventral:** Simon Hinkley & Ken Walker Museum Victoria Museums Victoria



New Zealand, Auckland Mangere, 2 June 2000, ex *Apis mellifera* cobs from hive  
**Male mouthparts:** Simon Hinkley & Ken Walker Museum Victoria Museums Victoria



New Zealand, Auckland Mangere, 2 June 2000, ex *Apis mellifera* cobs from hive  
**Ventral male:** Simon Hinkley & Ken Walker Museum Victoria Museums Victoria

Results Generated:

Sunday, May 9, 2021

