

## 1. PaDIL Species Factsheet



---

### Scientific Name:

*Colletotrichum sublineolum* Henn. ex Sacc. & Trotter

Ascomycota, Sordariomycetes, Incertae sedis, Glomerellaceae

### Common Name

Anthrachnose

Live link: <http://www.padil.gov.au/thai-bio/Pest/Main/140459>

### Image Library

Thailand Biosecurity

Live link: <http://www.padil.gov.au/thai-bio/>

### Partners for Thailand Biosecurity image library



Department of Agriculture, Thailand

<http://www.doa.go.th/>

## 2. Species Information

### 2.1. Details

**Specimen Contact:** Photchana Trakunsukharat - pchana13@hotmail.com

**Author:** Trakunsukharat, P., Lertprasertat, K.

**Citation:** Trakunsukharat, P., Lertprasertat, K. (2011) Anthracnose (*Colletotrichum sublineolum*) Updated on 2/25/2011 Available online: PaDIL - <http://www.padil.gov.au>

**Image Use:** Free for use under the Creative Commons Attribution-NonCommercial 4.0 International (CC BY-NC 4.0)

### 2.2. URL

Live link: <http://www.padil.gov.au/thai-bio/Pest/Main/140459>

### 2.3. Facets

**D1 - Country:** South and South-East Asia

**D2 - Province:** Chai Nat, Nakhon Sawan, Phitsanulok, Sukhothai, Suphan Buri

**Group Overview:** Disease

**Group Type:** Fungi - All

**Host Overview:** Field Crops

**Host Type:** Grains

**Risk:** Unknown

**Status:** Native Thailand Disease Species

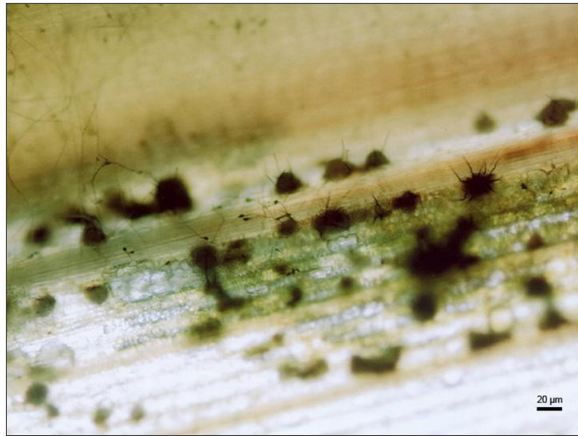
### 2.4. Other Names

*Colletotrichum sublineola* Henn. ex Sacc. & Trotter

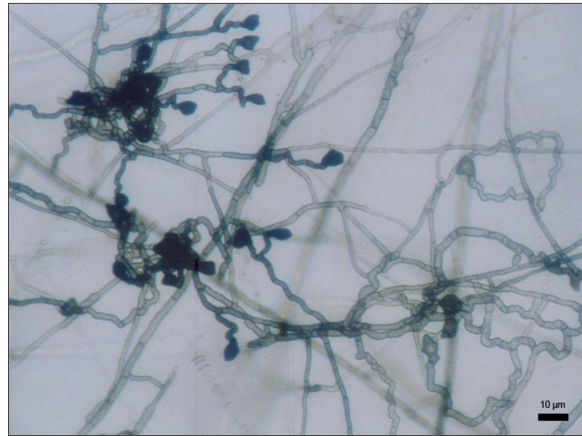
### 2.5. Diagnostic Notes

*Colletotrichum sublineolum*'s colonies showed grayish to dark color in green-margin on PDA medium. Sclerotia formed in black color, dense and immersed to superficial of media. Under the microscopic condition, size and shape of conidia, appressoria, and setae were determined and measured. Conidia are single hyaline cells, falcate, lunate shape, apices acute, 17-39 (+4.0) x 3-5 (+0.62)  $\mu\text{m}$ . Appressoria present an irregular-edged shape, dark brown, 4-23 (+13.8) x 6-22 (+9.9)  $\mu\text{m}$ . Setae consist of 3-6 septa, dark brown color with 24-100 (+109.7)  $\mu\text{m}$ .

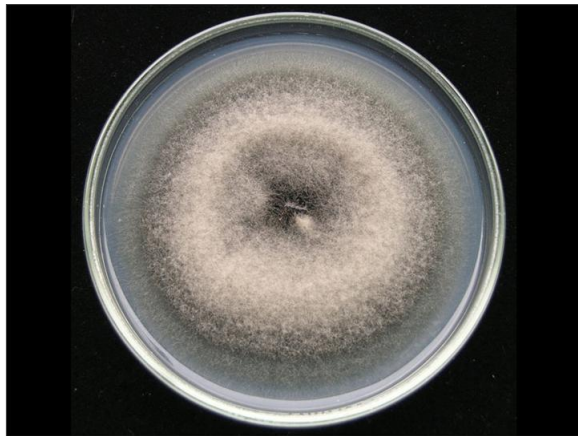
### 3. Diagnostic Images



Acervuli of *Colletotrichum sublineolum* on Sweet sorghum  
**Acervuli:** Photchana Trakunsukharat Department of Agriculture, Thailand



Appressoria and Hyphae of *Colletotrichum sublineolum*  
**Appressoria and Hyphae:** Photchana Trakunsukharat Department of Agriculture, Thailand



Culture of *Colletotrichum sublineolum*  
**Culture plate:** Photchana Trakunsukharat Department of Agriculture, Thailand



Anthracnose on Sweet sorghum  
**Host symptoms:** Photchana Trakunsukharat Department of Agriculture, Thailand

Results Generated:

Friday, January 22, 2021

